



Type FA10 Coalescing Filter

The FA10 Coalescing Filter provides superior filtration while allowing for high flow with minimum pressure drop. The polycarbonate bowl allows for visual indication of the filtered liquid level. The metal bowl option allows for pressures up to 250 psig. The quick release lock on the drain bowl allows for fast and easy replacement of the filter element.

Features

- 1/8", 1/4" or 1/2" NPT Porting
- Removes Liquid Aerosols & Sub-micron Particles
Liquids gravitate to the bottom of the element and will not re-enter the airstream
- Oil-free Air For critical applications, such as air gauging and pneumatic instrumentation and controls.
- Low Pressure Drop
- Optional Metal Bowl For pressures up to 250 psig.
- Optional Automatic Drain

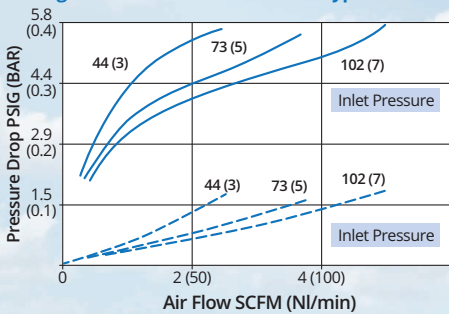


Flow Curves

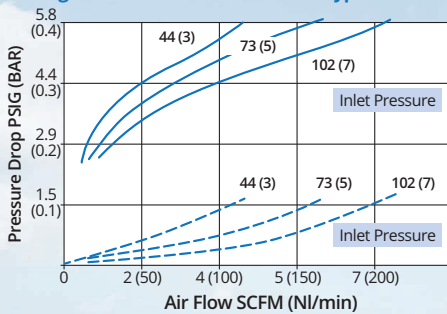
————— With Saturated Element

- - - - - Initial Condition

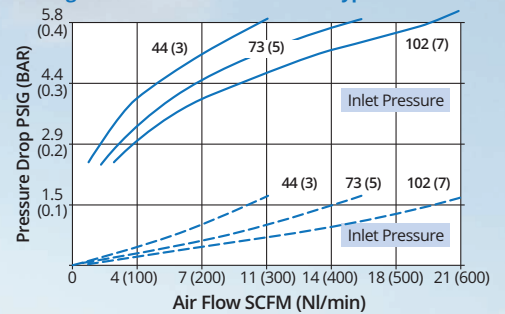
Regulated Pressure vs Flow: 1/8" Type FA10-ACM



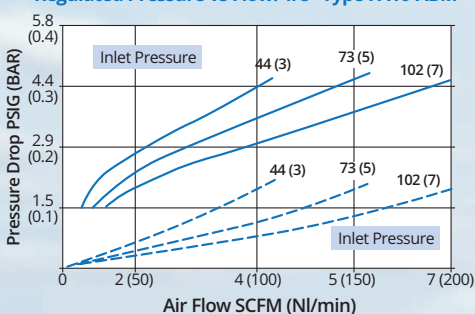
Regulated Pressure vs Flow: 1/4" Type FA10-BCM



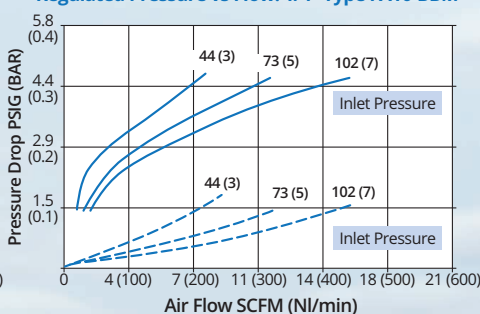
Regulated Pressure vs Flow: 1/2" Type FA10-DCM



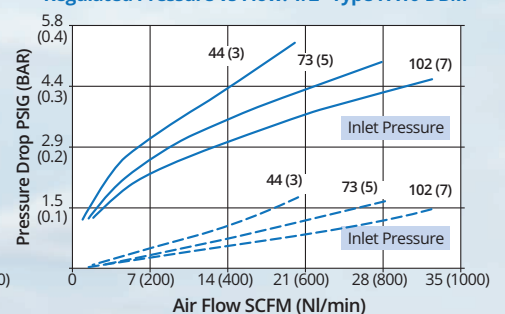
Regulated Pressure vs Flow: 1/8" Type FA10-ABM



Regulated Pressure vs Flow: 1/4" Type FA10-BBM

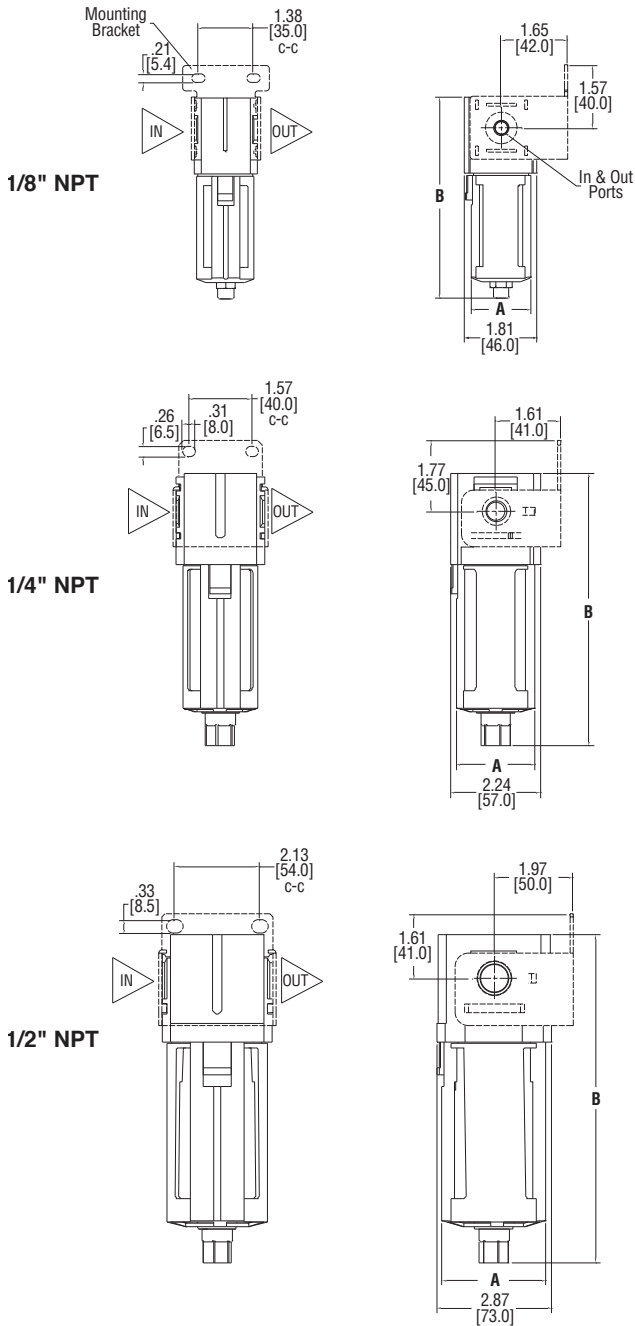


Regulated Pressure vs Flow: 1/2" Type FA10-DBM



Type FA10 Coalescing Filter

Dimensions



	1/8" Manual/Poly Inch mm	1/8" Manual/Metal Inch mm	1/8" Auto/Poly Inch mm	1/8" Auto/Metal Inch mm	1/4" Manual/Poly Inch mm	1/4" Manual/Metal Inch mm
A	1.49 37.9	1.43 36.3	1.49 37.9	1.40 35.6	1.96 49.8	1.89 48.0
B	4.30 109.3	4.30 109.3	5.02 127.6	5.00 127.0	5.80 147.3	5.88 149.4

	1/4" Auto/Poly Inch mm	1/4" Auto/Metal Inch mm	1/2" Manual/Poly Inch mm	1/2" Manual/Metal Inch mm	1/2" Auto/Poly Inch mm	1/2" Auto/Metal Inch mm
A	1.96 49.8	1.89 48.0	2.59 65.8	2.23 56.1	2.59 65.8	2.21 56.1
B	6.82 173.2	6.78 172.2	7.10 180.3	7.33 186.1	8.19 208.0	8.32 211.3

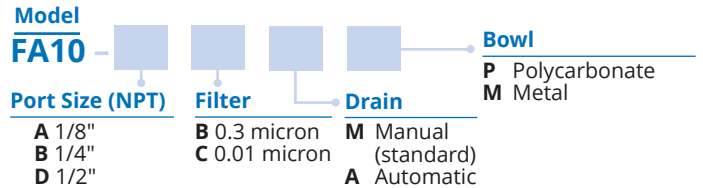
Specifications

	Polycarbonate Bowl	Metal Bowl
Max. Operating Pressure	150 psig (10 bar)	250 psig (17 bar)
Proof Pressure	200 psig (15 bar)	300 psig (20 bar)
Temperature Limits	23° to 140° F (-5° to 60° C) (Non-freezing)	
Flow Capacities	Port 1/8" 7 scfm (200 l/m) 1/4" 16 scfm (450 l/m) 1/2" 39 scfm (1100 l/m)	
Drain Capacities	1/8" 0.51 oz (15 cm ³) 1/4" 1.28 oz (38 cm ³) 1/2" 1.89 oz (56 cm ³)	
Filtration (micron)	0.3 or 0.01	
Mounting	In-line or Bracket (Option)	
Supply/Output Port	1/8", 1/4", or 1/2" NPT	
Weight	1/8" 0.31 lbs (0.14 kg) 1/4" 0.53 lbs (0.24 kg) 1/2" 1.1 lbs (0.5 kg)	0.66 lbs (0.3 kg) 1.36 lbs (0.62 kg) 1.65 lbs (0.75 kg)

Materials

Body	Aluminum	
Bowl	Polycarbonate or Aluminum	
Bowl Guard	Nylon	

Ordering Use this coding system to order



Accessories

Mounting Bracket (zinc-plated steel):

1/8" NPT	P/N 446-707-119
1/4" NPT	P/N 446-707-120
1/2" NPT	P/N 446-707-121

Warranty ControlAir LLC products are warranted to be free from defects in materials and workmanship for a period of eighteen months from the date of sale, provided said products are used according to ControlAir LLC recommended usages. ControlAir LLC's liability is limited to the repair, purchase price refund, or replacement in kind, at ControlAir LLC's sole option, of any products proved defective. ControlAir LLC reserves the right to discontinue manufacture of any products or change products materials, designs or specifications without notice. Note: ControlAir LLC does not assume responsibility for the selection, use, or maintenance of any product. Responsibility for the proper selection, use, and maintenance of any ControlAir LLC product remains solely with the purchaser and end user. Drawing downloads available at www.controlair.com



8 Columbia Drive / Amherst, NH 03031 USA / www.controlair.com / sales@controlair.com / 603-886-9400 / FAX 603-889-1844

An ISO 9001:2015 Registered Company

P/N 441-625-073 6/4/20